



## Restricted Zone

Restricted Zone is an innovative Traffic Access Control System that effectively restricts unwanted traffic in certain areas and directs them towards less congested routes. The ANPR-based solution replaces the traditional practices of using physical barriers and offers a cost-effective, low maintenance solution that seamlessly integrates with existing ANPR cameras. It ensures improved operations, cost efficiency, and reduced traffic violations while serving as a next-generation checkpoint that provides valuable traffic data for research and development purposes.



## Features

### ANPR access control

Identify and classify vehicles, eliminating the need for physical barriers and RFID tags.

### Remote management

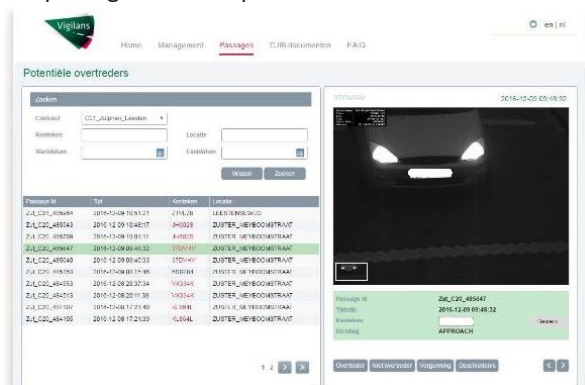
System can be managed remotely, and its low maintenance features make it more cost-effective.

### Flawless identification

Ensure all violators are penalized with proper evidence. Built-in count and classification, traffic volume analysis.

### Next-gen checkpoint

"Virtual Check-Point" with barrier-free operation, replacing traditional practices.



## Implementation

For municipality De Bilt in the Netherlands, we implemented our access control system that successfully directs unwanted traffic to routes that are of less hindrance to citizens. Traffic that is allowed to access the restricted area is not affected by the system.

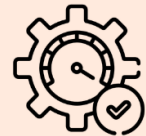


## Advantages

ARS offers a complete, cost-effective, and low maintenance solution for access control. Improves the quality of life for residents and visitors by minimizing traffic congestion and allowing emergency services to pass through quickly.

### IMPROVED OPERATIONS

Absence of physical barriers ensures that there are no blockages caused by potential equipment failures.



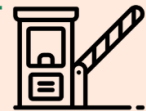
### TRAFFIC DATA COLLECTION

The built-in count and classification features keep track of traffic volume for research and development purposes.



### VIRTUAL CHECKPOINT

Restrict access to the general public while allowing access to exempted vehicles. Eliminate the need for physical barriers and RFID tags.



### COST EFFICIENCY

Cost-effective and low maintenance solution that easily integrates vehicle data from even existing ANPR cameras placed at the entry and exit of a restricted zone.





## Benefits

### Enhanced security

- Eliminates the risk of accidents associated with traditional access control
- Does not rely on retractable obstacles or in-car receivers.

### Improved access management

- Redirect traffic away from restricted areas
- Improve the efficiency of a transport network

### Real-time monitoring and reporting

- Greater visibility into who is accessing the areas
- Streamlines the access management process

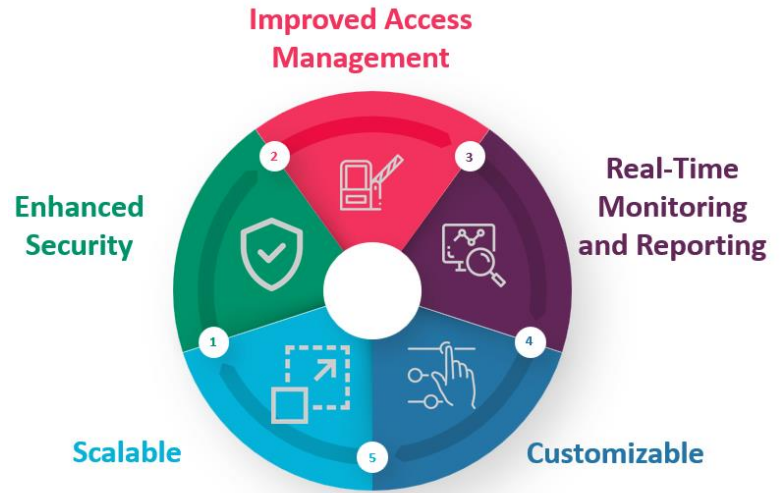
### Customizable

- Meets the specific needs of each customer
- Accommodates complex access requirements

### Scalable

- Operate continuously, minimal maintenance
- No need for extensive reconfiguration

Contact us today to learn more about how our product can transform your access control infrastructure.



## About ARS T&TT

ARS Traffic & Transport Technology (ARS T&TT), headquartered in the Netherlands has been providing intelligent traffic and transport technology solutions to businesses and government bodies for over twenty years. We are an active player in our home market of the Netherlands, with a particular emphasis on meeting the growing international demand for innovative transportation solutions. Our mission as an independent 'Intelligent Transport System' (ITS) solutions provider is to rapidly expand our leading position in the fast-growing smart traffic and transportation markets. We believe continuous improvement and innovation enable us to achieve this mission.

For more information, contact us: [info@ars.nl](mailto:info@ars.nl)



100+  
Projects



8  
Countries



24  
Years of experience



350+  
Employees

